

NC 82 STH Entrances & Windows

Manufactured and Distributed by:

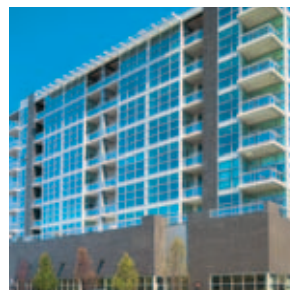
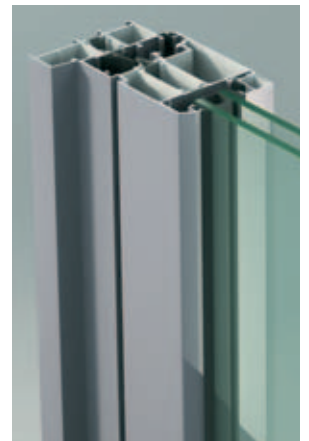


40 Murphy Drive, Avon, MA 02322

Tel: 508-588-4845 • 800-498-4845

Fax: 508-587-3939

www.archglazing.com



NC 82 STH

Features

- 6063-T5 Aluminum Alloy Frame
- Frame Depth 82 mm [3 1/4"]
- Max Glass Size 38 mm [1 1/2"]
- Weather Stripping: EPDM Gaskets
- Thermal Barrier: Polyamide
- Heavy Duty Hinges
- Multi-Point Lock System
- Durable Components

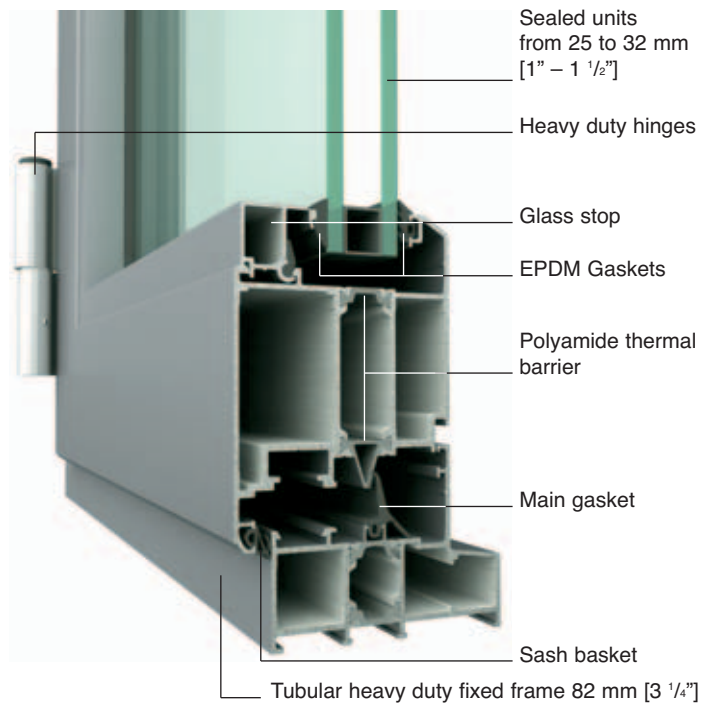
Benefits

- Acoustic Insulation
- Thermal Insulation
- Quiet and Smooth Closing System
- Easy Maintenance

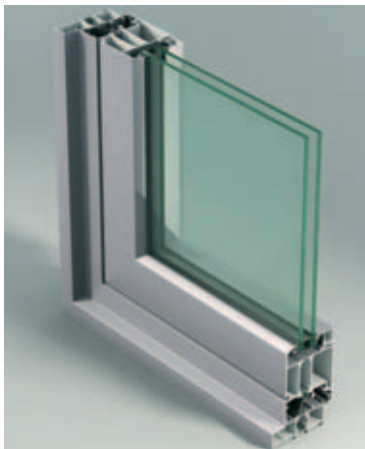
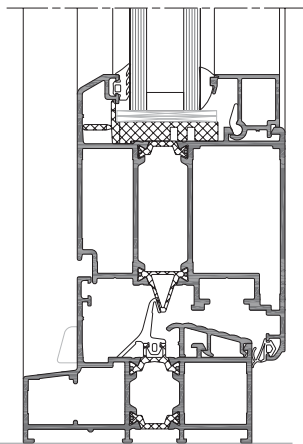
Applications

- Doors
- Fixed Windows
- Operable Windows

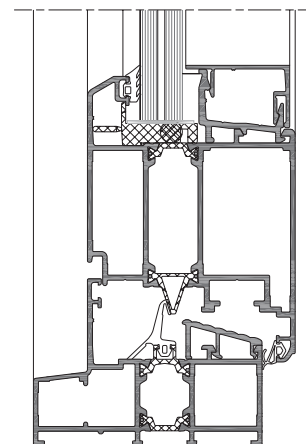
Technology



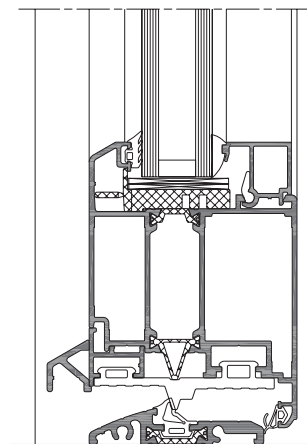
Standard solution







Hurricane-proof solution



ADA solution

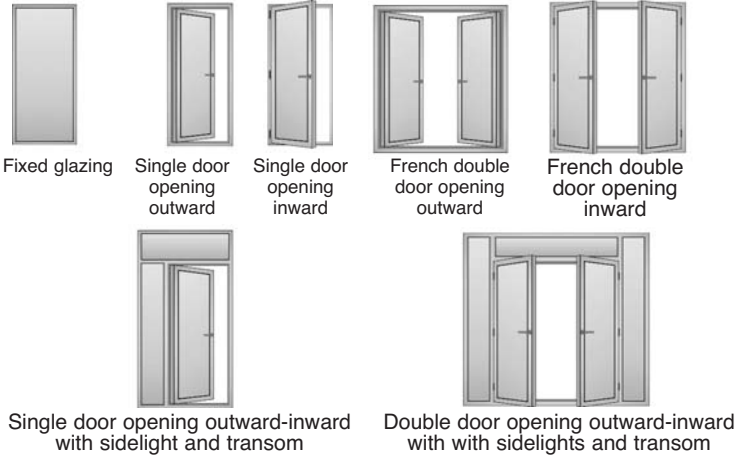


Performance data

Tested Configuration	Specimen Size	Threshold	AAMA/WDMA/CSA 101/I.S.2/A440-05		TAS
			AAMA	CSA	
 Side lite	1220 x 2440 mm [48" x 96"]	-	C 90		DP100 Structural load: DP100 Cycling test: DP100
			Design pressure: 6436 Pa [135 psf]		
			Water penetration: 720 Pa [15 psf]		
 Transom	2440 x 762 mm [96" x 30"]	-	C 90		-
			Design pressure: 6436 Pa [135 psf]		
			Water penetration: 720 Pa [15 psf]		
 Single Door Opening Inward	1220 x 2440 mm [48" x 96"]	Standard threshold	ATD-AW75		-
			Design pressure: 5386 Pa [112 psf]		
			Water penetration: 720 Pa [15 psf]		
		ADA threshold	ATD-AW 55 / SHD-AW 55		-
			Design pressure: 3926 Pa [82 psf]		
			Water penetration: 720 Pa [15 psf]		
 Double Door Opening Inward	2440 x 2440 mm [96" x 96"]	Standard threshold	ATD-AW75		DP100 * Structural load: DP100 Cycling test: DP70
			Forced entry: F20		
			Water resistance: B7		
		ADA threshold	ATD-AW70		-
			Design pressure: 5027 Pa [105 psf]		
			Water penetration: 720 Pa [15 psf]		
-	SHD-C35		-		
	Design pressure: 1675 Pa [35 psf]				
	Water penetration: 720 Pa [15 psf]				

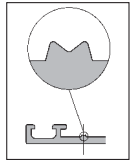
*: TAS large missile impact test performed on Opening Outward Double Door

Configurations



Quality

METRA stands for quality and optimal performance. Only original METRA profiles and accessories can certify the highest performance. Original METRA products have an "M" mark on the interior surface.



METRA quality is certified by ISO 9001. METRA controls the entire process of production for the extrusions. Manufacturing and installation of final products are performed through a network of independent specialists.



Manufactured and Distributed by:



40 Murphy Drive, Avon, MA 02322
Tel: 508-588-4845 • 800-498-4845
Fax: 508-587-3939
www.archglazing.com



METRA
SYSTEMS

METRA Systems
1995 Industrial Blvd. - Laval, QC H7S 1P6, Canada
Tel. +1 450 629 1806 - Fax +1 450 629 7313
info@metrasystem.com
www.metrasystem.com



METRA

METRA S.p.A.
Via Stacca, 1 - 25050 Rodengo Saiano (BS) Italy
Tel. +39 030 6819.1 - Fax +39 030 6819 990
metra@metra.it
www.metra.eu

METRA Products

Architectural Envelope

Entrances & Windows

Special Systems

Sliding Systems

Accessories

Printed in September 2008