

NC-S 150 SD

Sliding Systems

Manufactured and Distributed by:

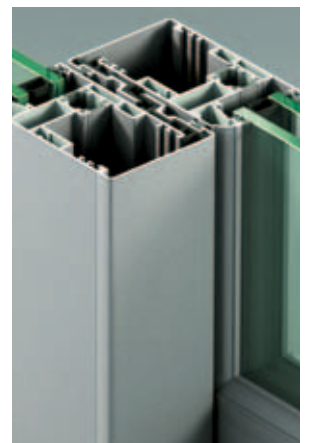


40 Murphy Drive, Avon, MA 02322

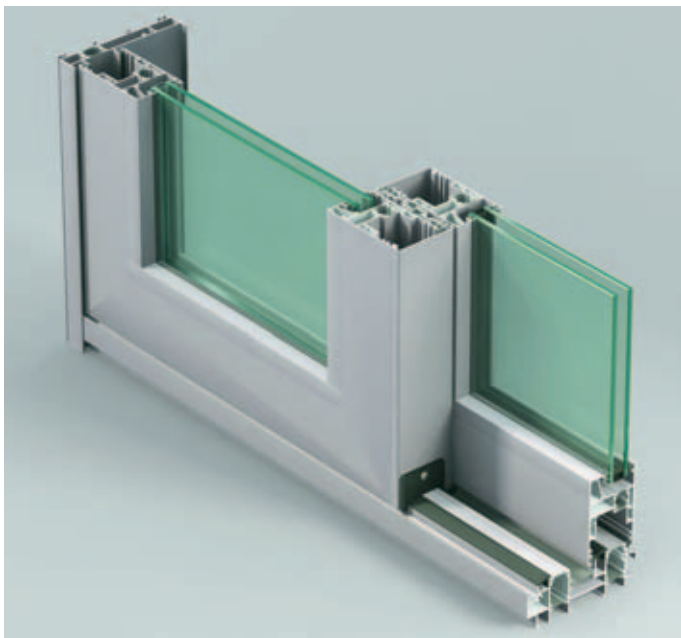
Tel: 508-588-4845 • 800-498-4845

Fax: 508-587-3939

www.archglazing.com



NC-S 150 SD

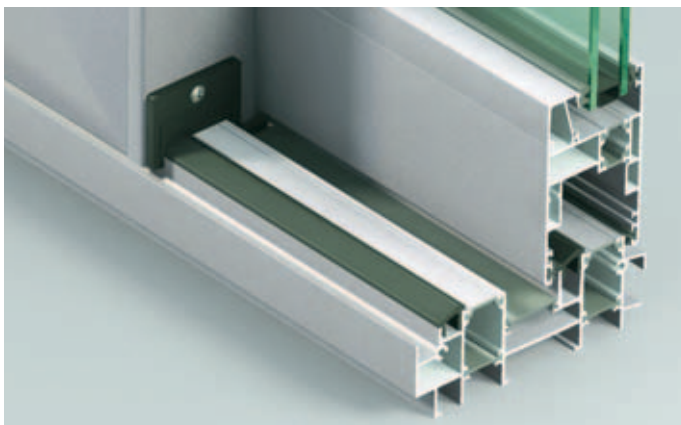


Features

- 6063-T5 Aluminum Alloy Frame
- Frame Depth: 150 mm [5 7/8"]
- Max Glass Size: 42 mm [1 5/8"]
- Max Sash Weight: 300 kg [660 lbs]
- Weather Stripping: EPDM or Brush Gaskets
- Thermal Barrier: Polyamide
- Lift-and-Slide Mechanism
- Remote Controlled Door System
- Multi-point Lock System
- Durable Components

Benefits

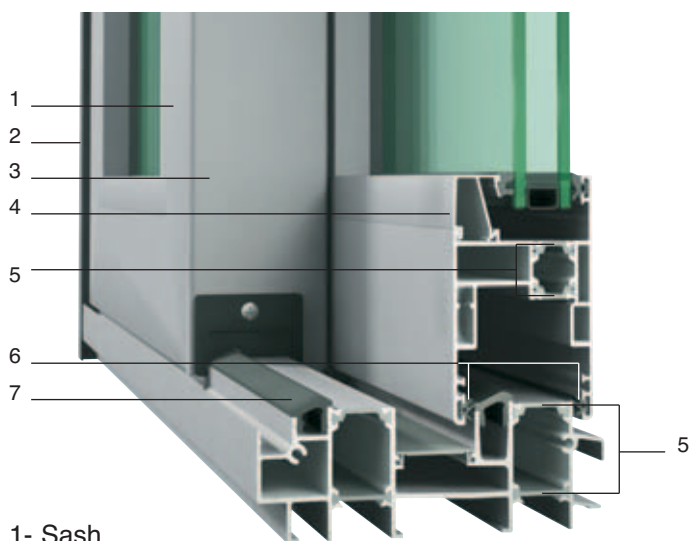
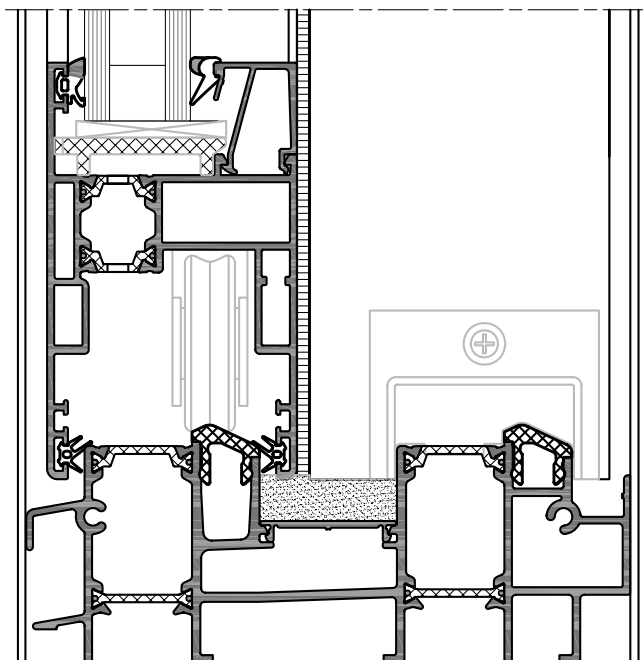
- Large Unobstructed Openings
- Acoustic Insulation
- Thermal Insulation
- Quiet and Smooth Closing System
- Easy Maintenance



Applications


- Doors
- Fixed Windows
- Windows

Technology

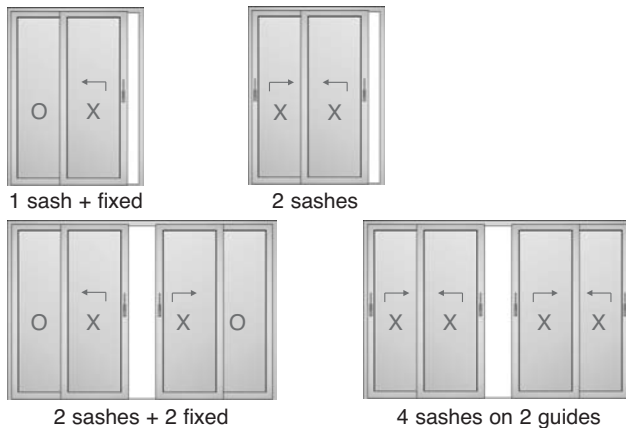


- 1- Sash
- 2- Frame
- 3- Painted or Anodized Finish
- 4- Glass Stop
- 5- Polyamidic Thermal Barrier
- 6- Weather Seal Gasket
- 7- Maintenance Free Sliding Guides

Performance data

Tested Configuration	Specimen Size	AAMA/WDMA/CSA 101/I.S.2/A440-05	European Standards
 <p>Lift and Slide</p>	<p>SD - AW 40</p> <p>4000 x 2500 mm [157" x 98"]</p>	Air infiltration: cfm/ft ² Q average	Air infiltration - EN 1026
		0.23 L/s-m ² @ 75 Pa 0.49 L/s-m ² @ 300 Pa	Class 4
		Water penetration: ASTM E331 - E547	Water penetration - EN 1027 EN 12208
		DP 65: 470 Pa [9.75 psf]	E1050
		Structural:	Wind resistant EN 12210 EN 12211
DP 40: 2873 Pa [60 psf]	A5		

Configurations



Automated Door System (Optional)

- Available Closing Systems:
 - Push and Go
 - Push Button
 - Remote Control
 - Motion Detector
- Min Sash Width: 750 mm [29 1/2"]
- Max Sash Width: 3300 mm [129 7/8"]
- Min Sash Height: 800 mm [31 1/2"]
- Max Sash Height: 3230 mm [127 1/8"]
- Max Sash Weight: 300 kg [660 lbs]
- Built-in Safe Mechanism

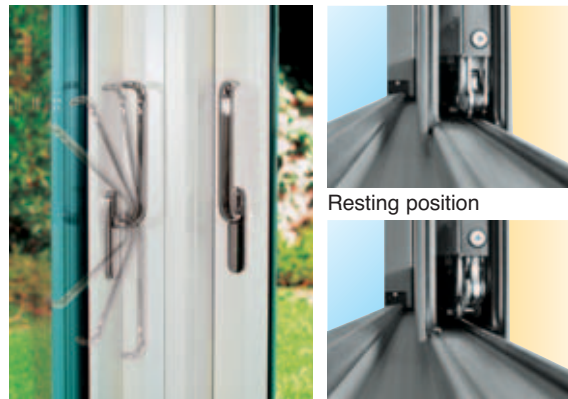


Glazing Options

The system provides design-flexibility to meet your performance needs. System will accommodate glass from 8 mm [3/8"] up to 42 mm [1 5/8"] in thickness. Different configurations can be evaluated with our Engineering Team.

Lift and Slide Solution

- It's ideal for moving large, heavy sashes with ease.
- Controlled and silent movement of the sash.
- Bear loads up to 300 kg [660 lbs].

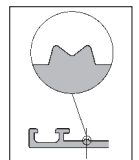


Handle movement

Sliding position

Quality

METRA stands for quality and optimal performance. Only original METRA profiles and accessories can certify the highest performance. Original METRA products have an "M" mark on the interior surface.



METRA quality is certified by ISO 9001. METRA controls the entire process of production for the extrusions. Manufacturing and installation of final products are performed through a network of independent specialists.



Manufactured and Distributed by:



**ARCHITECTURAL
GLAZING
SYSTEMS, INC.**

40 Murphy Drive, Avon, MA 02322
Tel: 508-588-4845 • 800-498-4845
Fax: 508-587-3939
www.archglazing.com



**METRA
SYSTEMS**

METRA Systems
1995 Industrial Blvd. - Laval, QC H7S 1P6, Canada
Tel. +1 450 629 4260 - Fax +1 450 629 7313
info@metrasystem.com
www.metrasystem.com



METRA

METRA S.p.A.
Via Stacca, 1 - 25050 Rodengo Saiano (BS) Italy
Tel. +39 030 6819.1 - Fax +39 030 6819 990
metra@metra.it
www.metra.eu

METRA prints on ecologically friendly paper
and uses printing products with low
environmental impact.



METRA Products

Architectural Envelope

Entrances & Windows

Special Systems

Sliding Systems

Accessories

Printed in September 2009