

NC-S 120 SD Sliding System

Manufactured and Distributed by:

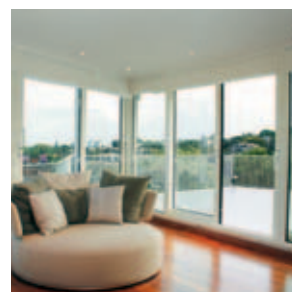
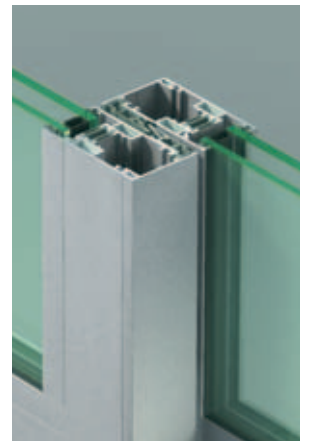


40 Murphy Drive, Avon, MA 02322

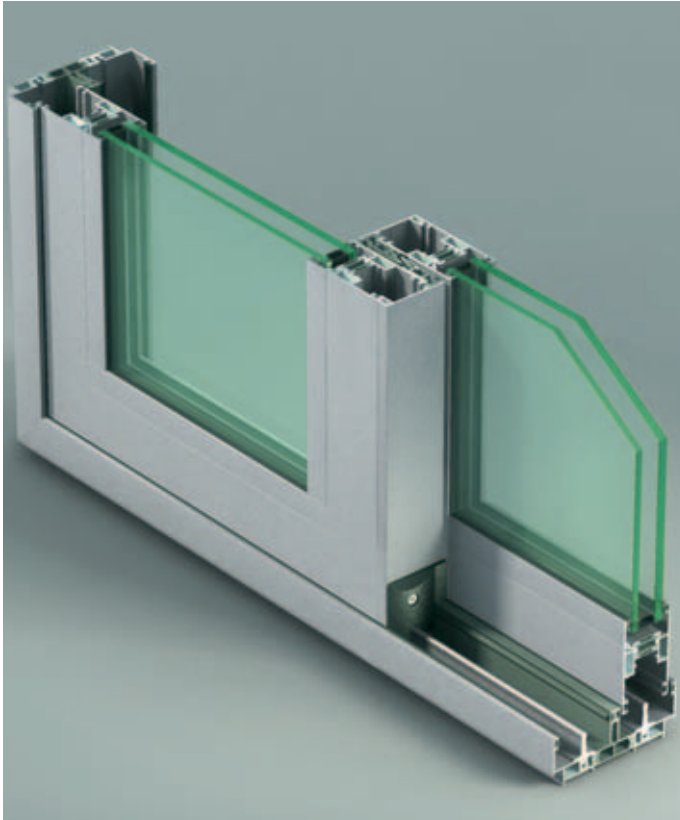
Tel: 508-588-4845 • 800-498-4845

Fax: 508-587-3939

www.archglazing.com



NC-S 120 SD



Features

- 6063-T6 Aluminium Alloy Frame
- Frame depth: 120 mm [4 3/4"]
- Frame assembly: 45° or 90° Corner Joint
- Sash assembly: 45° cut. Heavy Duty Corner Keys
- Dry-Glazing
- Glazing Sizes: 26 to 32 mm [1" to 1" 1/4]
- Max Sash Weight: 200 kg [440 lbs]
- Weather Stripping: Elaprene or Brush gaskets
- Thermal Barrier: Polyamide
- Slide or Lift and Slide Mechanism
- Multi-point Lock System
- Durable Components

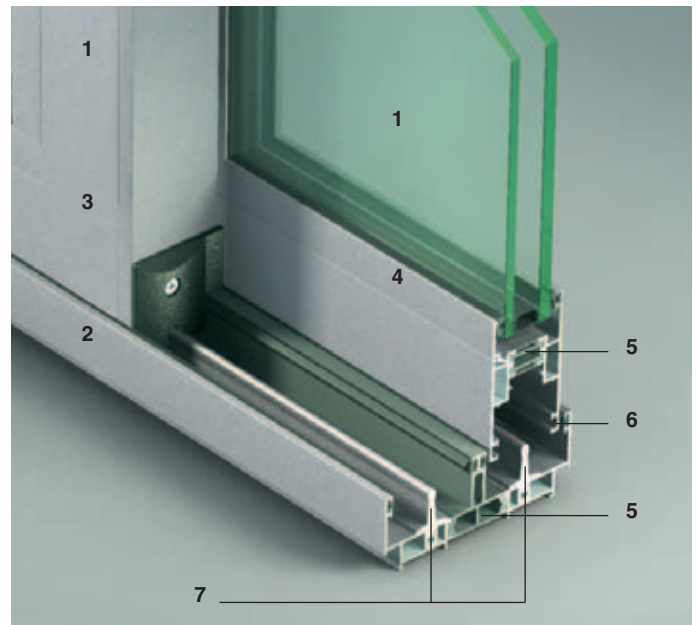
Benefits

- Quick Assembly and Ease of Installation
- Large Unobstructed Openings
- Reinforced Center Node
- Acoustic Insulation
- Thermal Insulation
- Quiet and Smooth Closing System
- Ease Maintenance

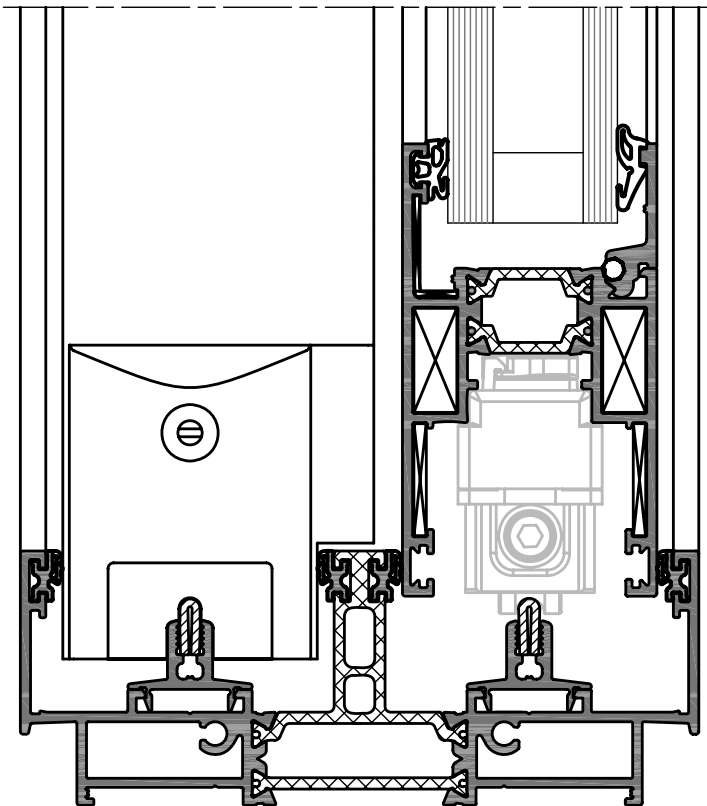
Applications

- Doors
- Windows

Technology




1. Sash
2. Frame
3. Painted or Anodized Finish
4. Glass stop
5. Polyamidic Thermal Barrier
6. Weather seal brush gasket
7. Maintenance Free Sliding Tracks



Vertical Section

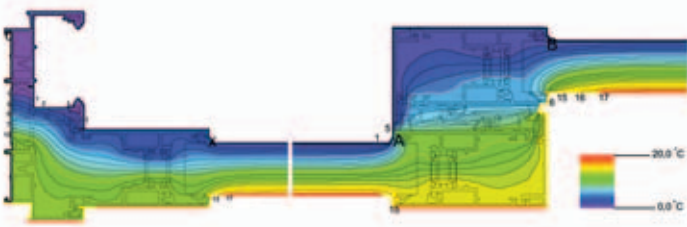
Performance Data

Tested Configuration	Dimensions	AAMA / WDMA / CSA 101 / I.S.2 / A440-05	
 <p>Sliding door</p>		Air tightness @ 75 Pa [1.57 psf]	
		infiltration:	exfiltration:
		Static water penetration: ASTM E331	
		Structural: ASTM A 501.1	

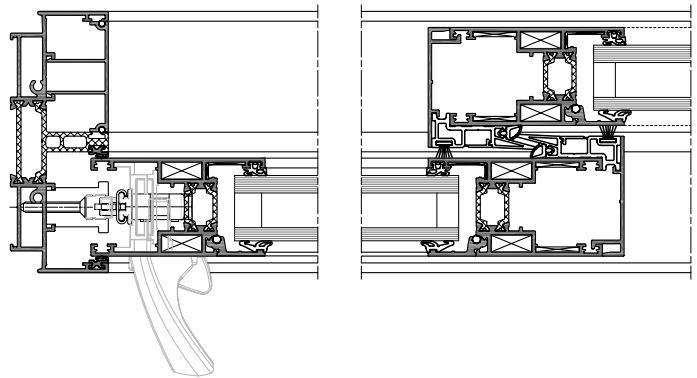
COMING SOON

Thermal Performances

Optimal Thermal Insulation Results



Main Sections



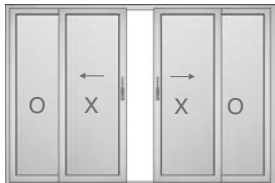
Configurations



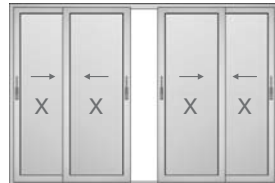
1 sash + fixed



2 sashes



2 sashes + 2 fixed



4 sashes on 2 Tracks

Dimensions

LxH@ 600 Pa [12.5 psf]:

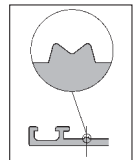
- 2 Sashes with Standard Interlock:
- 2800 x 2000 mm [110" x 78"]
- 2 Sashes with Reinforced Interlock:
- 4000 x 2400 mm [157" x 94"]
- 2 Sashes with Reinforced Interlock and Steel Insert:
- 4000 x 2800 mm [157" x 110"]

Glazing Options

Glass Sizes Ranging, from 26 [1"] to 32 mm [1 1/4"]
Different configurations can be evaluated with our Engineering Team

Quality

METRA stands for quality and optimal performance. Only original METRA profiles and accessories can certify the highest performance. Original METRA products have an "M" mark on the interior surface.



METRA quality is certified by ISO 9001. METRA controls the entire process of production for the extrusions. Manufacturing and installation of final products are performed through a network of independent specialists.

Lift and Slide Solution



- It's ideal for moving large, heavy sashes with ease.
- Controlled and quiet movement of the sash.
- Bear loads up to 200 kg [440 lbs].

Handle movement



Manufactured and Distributed by:



40 Murphy Drive, Avon, MA 02322
Tel: 508-588-4845 • 800-498-4845
Fax: 508-587-3939
www.archglazing.com



METRA
SYSTEMS

METRA Systems
1995 Industrial Blvd. - Laval, QC H7S 1P6, Canada
Tel. +1 450 629 4260 - Fax +1 450 629 7313
info@metrasystem.com
www.metrasystem.com



METRA

METRA S.p.A.
Via Stacca, 1 - 25050 Rodengo Saiano (BS) Italy
Tel. +39 030 6819.1 - Fax +39 030 6819 990
metra@metra.it
www.metra.eu

METRA prints on ecologically friendly paper
and uses printing products with low
environmental impact.



METRA Products

Architectural Envelope

Entrances & Windows

Special Systems

Sliding Systems

Accessories

Printed in September 2009